

Yard Hydrant Made Easy™

Instruction Manual for Models 101 & 303

This manual is for telescoping models only. If you have a kit model, see corresponding instructions.



MIDWEST INNOVATIVE TECHNOLOGIES

Patent No. 8,413,675

IN GOD WE TRUST

US Customer Service: 618-740-0074

www.mitimfg.com

INSTALLATION VIDEO



Scan the QR code or go to
mitimfg.com/videos.

Also from Midwest Innovative Technologies

Thank you for your purchase of a Yard Hydrant Made Easy™!

If you love the Yard Hydrant Made Easy™, check out our Wall Hydrant Made Easy™. The Wall Hydrant Made Easy™ applies the concept of the Yard Hydrant Made Easy™ - quick and easy hydrant replacement – to wall hydrants, saving owners the time, expense, and hassle of replacing a hydrant while also protecting against flooding and water damage when a hydrant freezes and ruptures.

Visit mitimfg.com to learn more.

Getting Started

Please note:

- This product is only compatible with $\frac{3}{4}$ -inch standard yard hydrants.
- DO NOT back-fill around the YHME without the yard hydrant first being installed. The hydrant needs to be in place in order to maintain correct positioning of all components during the back-fill process.
- DO NOT connect and tighten any water supply fittings to the YHME until your yard hydrant is installed with the top cap in place. Doing so could lead to misalignment of the pitless adapter.
- We recommend using at least 2' of flexible pipe/tube (PEX or soft copper) to connect the Yard Hydrant Made Easy™ to the water supply line. This will minimize pipe strain in the event of shifting soil. "Black poly," or "black coil plastic," flexible tubing will serve this purpose, though this is not standard on new water line installations.

Additional Supplies Needed:

- New $\frac{3}{4}$ -inch standard frost-free yard hydrant
- Minimum of 2 feet of flexible pipe/tube and fittings to connect to YHME's 1-inch female threaded inlet*
- Pipe thread sealant
- Flashlight
- Shovel
- Gravel for bottom of YHME filtered drainage compartment

*Note: You can use 1" PEX to connect to the YHME, but installers often use a 1"x $\frac{3}{4}$ " bushing to accommodate a $\frac{3}{4}$ " water line. This line-size reduction reduces fitting cost. One way to do this would be to 1) connect a 1" MIP x $\frac{3}{4}$ " FIP brass bushing to the YHME, 2) connect a Legend Brass $\frac{3}{4}$ " T-4300NL No-Lead Bronze Pack Joint (CTS) x MNPT Coupling (or equivalent) to the bushing, 3) connect at least 2 feet of $\frac{3}{4}$ " PEX (CTS) to the fitting, and 4) connect the PEX to your water line.

Installation Procedure

1. Excavate the ditch to the required water supply depth. To accommodate the filtered drainage section of the YHME, dig a secondary hole roughly 12 inches in diameter and 8 inches deeper than the water line. Place a small amount of gravel in the bottom of this hole such that the 1" FIP inlet fitting on the YHME will line up with the water line.
2. Remove the top cap from the YHME (will be re-assembled at step #12) using the hex (Allen) wrench provided.
3. Pull the ¾-inch PVC riser pipe STRAIGHT up and out from inside the YHME riser. DO NOT attempt to unscrew the PVC pipe while still in the YHME casing. The removable portion of the pitless adapter will come out as well.
4. Unscrew the ¾-inch PVC pipe from the brass nipple connected to the removable portion of the pitless adapter and discard the PVC pipe.
5. Apply thread sealant to the threads of the brass nipple, and screw the nipple, with the removable portion of the pitless adapter, into the bottom of the new hydrant. As you tighten this fitting note what direction you want your hydrant to face.
6. While the YHME is in its shortest position, insert the new yard hydrant with the removable portion of the pitless adapter assembly down into the YHME body. The removable portion of the pitless adapter must align with the stationary portion of the pitless adapter mounted in the bottom of the YHME body and then slide into place. A flashlight may be needed to see down into the bottom of the YHME casing while completing this step.
7. Measure the final depth of the ditch and adjust the height of the YHME by loosening the stainless-steel clamp at the bottom of the YHME and extending the riser up the yard hydrant to a height that will allow the top cap to be above final grade level, and re-tighten the clamp. **Do not exceed the maximum extension level, which is marked by a white line around the inside riser.**
8. Reinstall the top cap to ensure that the hydrant is centered for the next step. First, install the half with the rubber gasket attached, and wrap the gasket around the hydrant. Then install the second half

and tighten the bolts with the provided hex (Allen) wrench. SNUG TIGHT ONLY. DO NOT OVER-TIGHTEN.

9. NOTE: If the top cap does not seal snugly enough against the hydrant or if tamper resistance is needed, the enclosed 1-inch hose clamp can be installed on the hydrant riser, just underneath the top cap.
10. Place the assembly into the hole, and connect the water supply.
11. Remove the top cap so that you can see down into the casing.
12. Verify that the hydrant handle is in the “off” position and turn on the water supply to check for leaks.
13. While holding down on the yard hydrant riser pipe, turn on the hydrant until water flows out, and then shut it off. This will allow you to visually confirm that the hydrant weep hole does not continue to drain while the hydrant handle is in the “off” position. Some weep holes can take 1-2 minutes to drain the hydrant column, but some hydrants will require handle adjustment (per manufacturer’s instructions) if the weep hole continues to discharge.
14. Re-assemble the top cap.
15. After confirming that there are no leaks at the connections to the YHME, backfill the hole surrounding the YHME. Begin by placing gravel around the drainage area of the YHME, at least up to the water supply connection. As you backfill, remember to leave the top cap of the YHME above ground.
16. Paint and/or tag the hydrant “non-potable” if/as required by local authorities.

NOTE ABOUT POURING CONCRETE AROUND THE YHME

The YHME can be a lifesaver when you want to bury your hydrant under a concrete slab. If doing so, be sure to place 1” of foam or other soft or removable material around the YHME before pouring concrete. That way, if the slab shifts due to shrinkage, settlement, or soil heaving, it will not affect the alignment or structural integrity of the YHME.

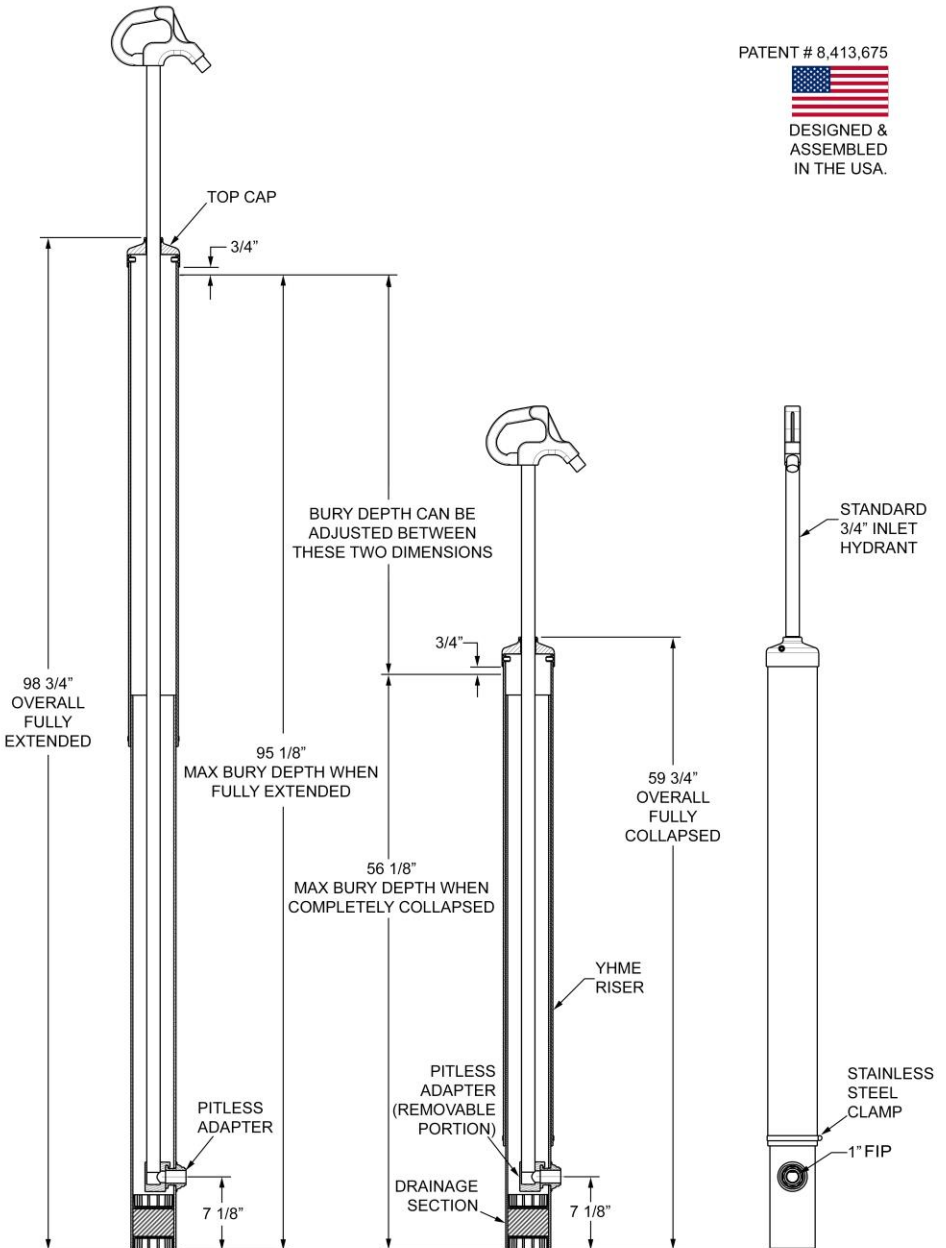
For more information and an installation video, visit mitimfg.com.

Product Diagram

PATENT # 8,413,675



DESIGNED &
ASSEMBLED
IN THE USA.



O-Ring Replacement Instructions

The Yard Hydrant Made Easy™ original o-ring (located in the removable section of the pitless adapter) should give you several years of service but eventually may get damaged while changing a hydrant. No problem; the o-ring is easy to replace if you ever get a leak. Your YHME was shipped with a spare o-ring. If you need more, you can order them at mitimfg.com.

Items Needed:

- Small flathead screw driver
- Pick tool (optional)
- New o-ring
- O-ring lubricant (non-petroleum grease)
- Flashlight (for installing hydrant)

1. Pull the hydrant out of the Yard Hydrant Made Easy™, along with the removable portion of the pitless adapter. You will find the o-ring installed in a groove on this part of the pitless adapter.
2. Remove the old o-ring with a pick tool or a small, flathead screwdriver. Be very cautious to avoid scratching the machined surfaces of the pitless adapter.
3. Clean out the groove to ensure there is no debris or grease.
4. Press the new o-ring firmly into the groove and make sure it is completely seated.
5. Apply non-petroleum grease to the visible side of the o-ring and the surrounding brass face (no grease on back side of o-ring or in groove).
6. Slide the hydrant and the removable portion of the pitless adapter back into the Yard Hydrant Made Easy™, properly mating the pitless adapter halves.

Contact Us

Midwest Innovative Technologies

402 S Broadway Ave.

Salem, Illinois 62881

Phone: 618-740-0074

Email: info@mitimfg.com

Web: www.mitimfg.com